



HSP77/76 Polyclonal Antibody

Catalog No	YP-Ab-04303
Isotype	IgG
Reactivity	Human;Rat;Mouse;
Applications	WB;ELISA
Gene Name	HSPA6/HSPA7
Protein Name	Heat shock 70 kDa protein 6/Putative heat shock 70 kDa protein 7
Immunogen	Synthesized peptide derived from the Internal region of human HSP77/76.
Specificity	HSP77/76 Polyclonal Antibody detects endogenous levels of HSP77/76 protein.
Formulation	Liquid in PBS containing 50% glycerol, 0.5% BSA and 0.02% sodium azide.
Source	Polyclonal, Rabbit,IgG
Purification	The antibody was affinity-purified from rabbit antiserum by affinity-chromatography using epitope-specific immunogen.
Dilution	Western Blot: 1/500 - 1/2000. ELISA: 1/20000. Not yet tested in other applications.
Concentration	1 mg/ml
Purity	≥90%
Storage Stability	-20°C/1 year
Synonyms	HSPA7; HSP70B; Putative heat shock 70 kDa protein 7; Heat shock 70 kDa protein B; HSPA6; HSP70B'; Heat shock 70 kDa protein 6; Heat shock 70 kDa protein B'
Observed Band	40kD
Cell Pathway	COP9 signalosome,extracellular exosome,blood microparticle,
Tissue Specificity	Cerebellum,Lung,Ovary,Skin,
Function	caution:Could be the product of a pseudogene.,function:In cooperation with other chaperones, Hsp70s stabilize preexistent proteins against aggregation and mediate the folding of newly translated polypeptides in the cytosol as well as within organelles. These chaperones participate in all these processes through their ability to recognize nonnative conformations of other proteins. They bind extended peptide segments with a net hydrophobic character exposed by polypeptides during translation and membrane translocation, or following stress-induced damage.,induction:Only at higher temperatures, and no basal expression.,similarity:Belongs to the heat shock protein 70 family.,
Background	caution:Could be the product of a pseudogene.,function:In cooperation with other chaperones, Hsp70s stabilize preexistent proteins against aggregation and mediate the folding of newly translated polypeptides in the cytosol as well as within organelles. These chaperones participate in all these processes through



their ability to recognize nonnative conformations of other proteins. They bind extended peptide segments with a net hydrophobic character exposed by polypeptides during translation and membrane translocation, or following stress-induced damage.,induction:Only at higher temperatures, and no basal expression.,similarity:Belongs to the heat shock protein 70 family.,

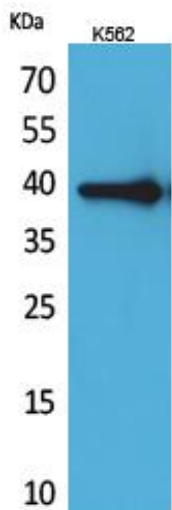
matters needing attention

Avoid repeated freezing and thawing!

Usage suggestions

This product can be used in immunological reaction related experiments. For more information, please consult technical personnel.

Products Images



Western Blot analysis of K562 cells using HSP77/76 Polyclonal Antibody. Secondary antibody(catalog#:RS0002) was diluted at 1:20000